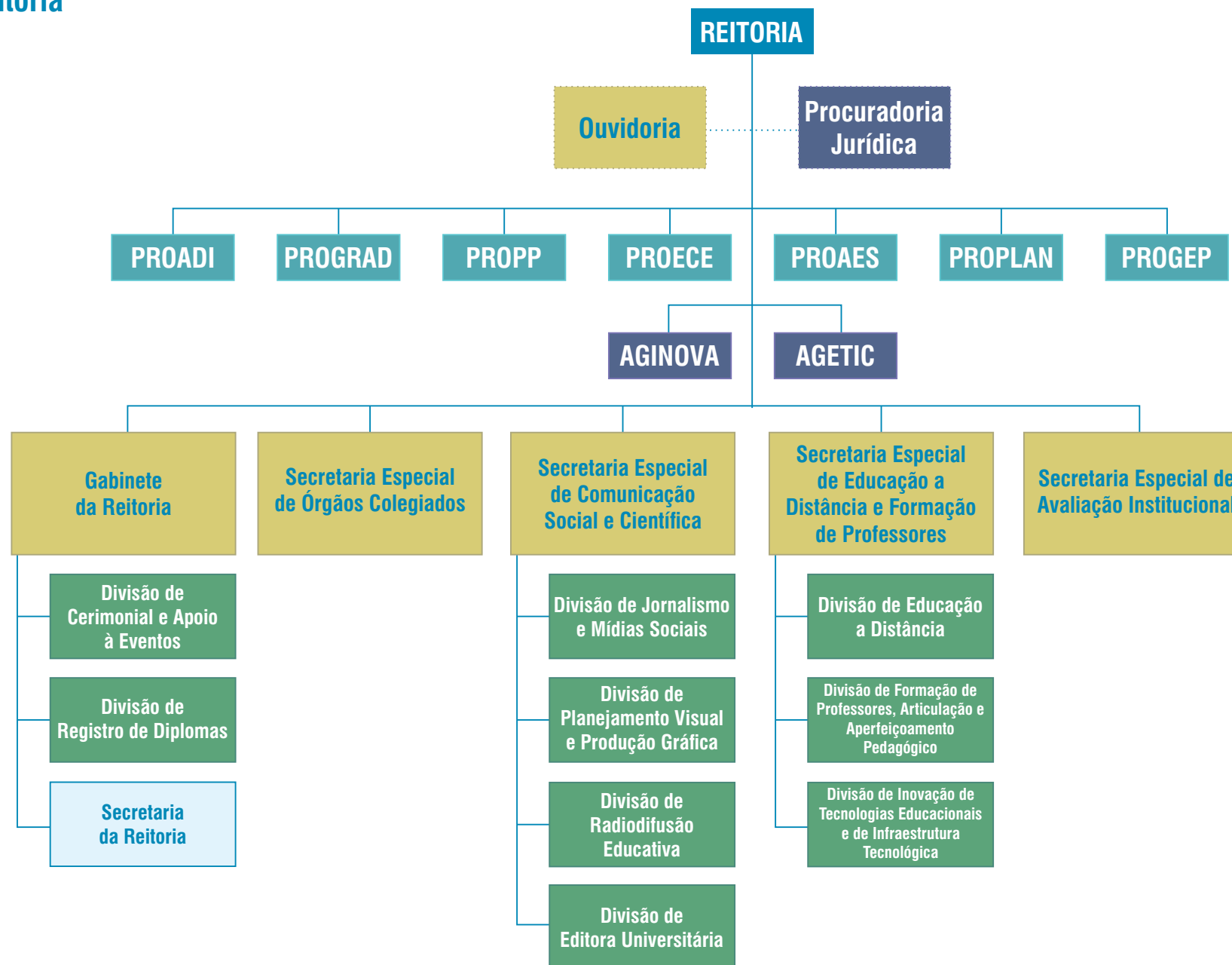


*A gestão do Hospital Universitário foi repassada para a EBSERH conforme contrato nº 251/2013-UFMS e foi alterada a denominação para Hospital Universitário Maria Aparecida Pedrossian - HUMAP



Estrutura Organizacional Reitoria

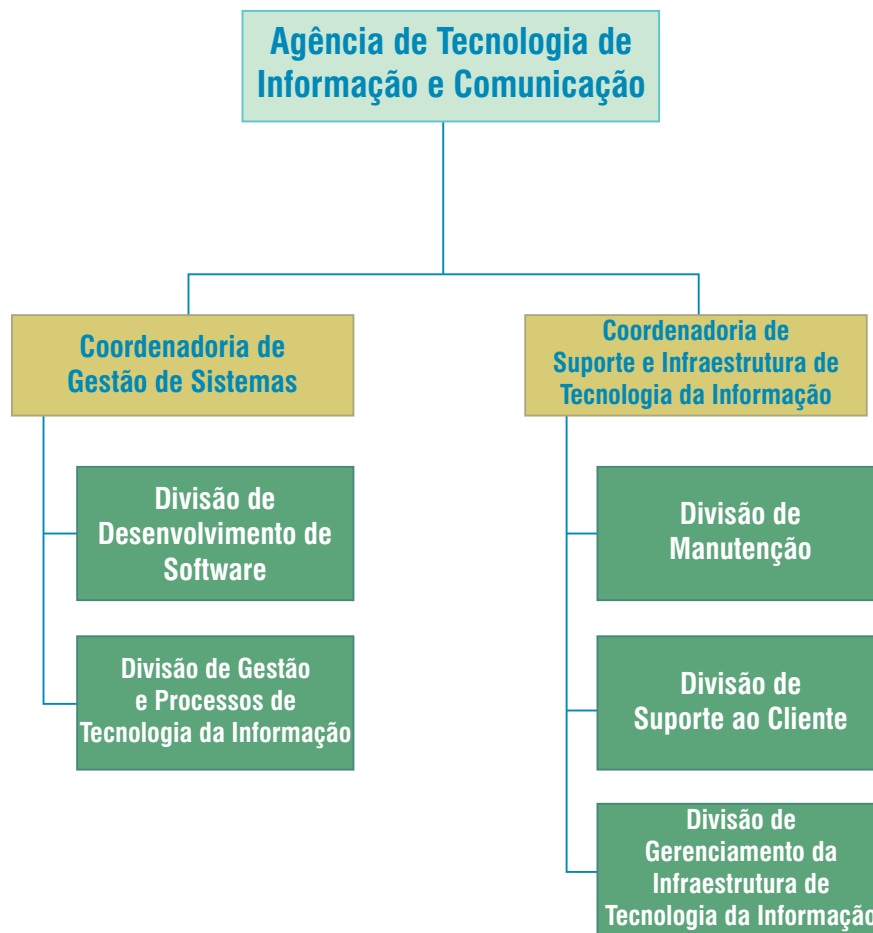


- CD 1
- CD 2
- CD 3
- CD 4
- FG 1
- FG 4



Estrutura Organizacional Agência de Tecnologia de Informação e Comunicação

- CD 3
- CD 4
- FG 1

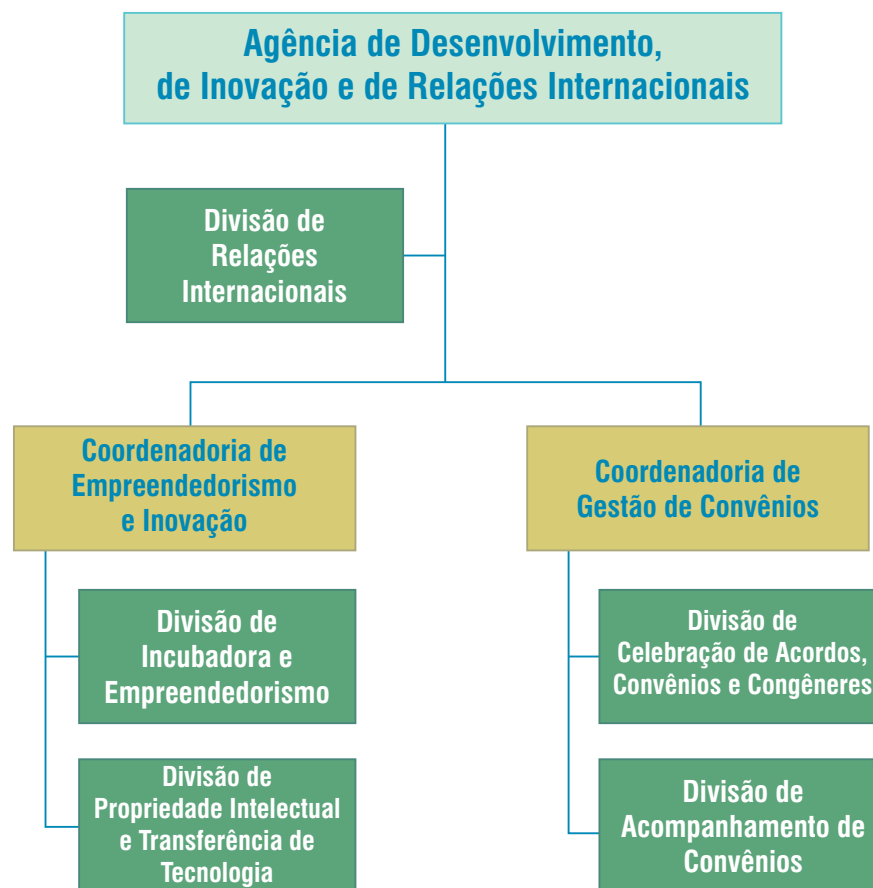




Estrutura Organizacional

Agência de Desenvolvimento, de Inovação e de Relações Internacionais

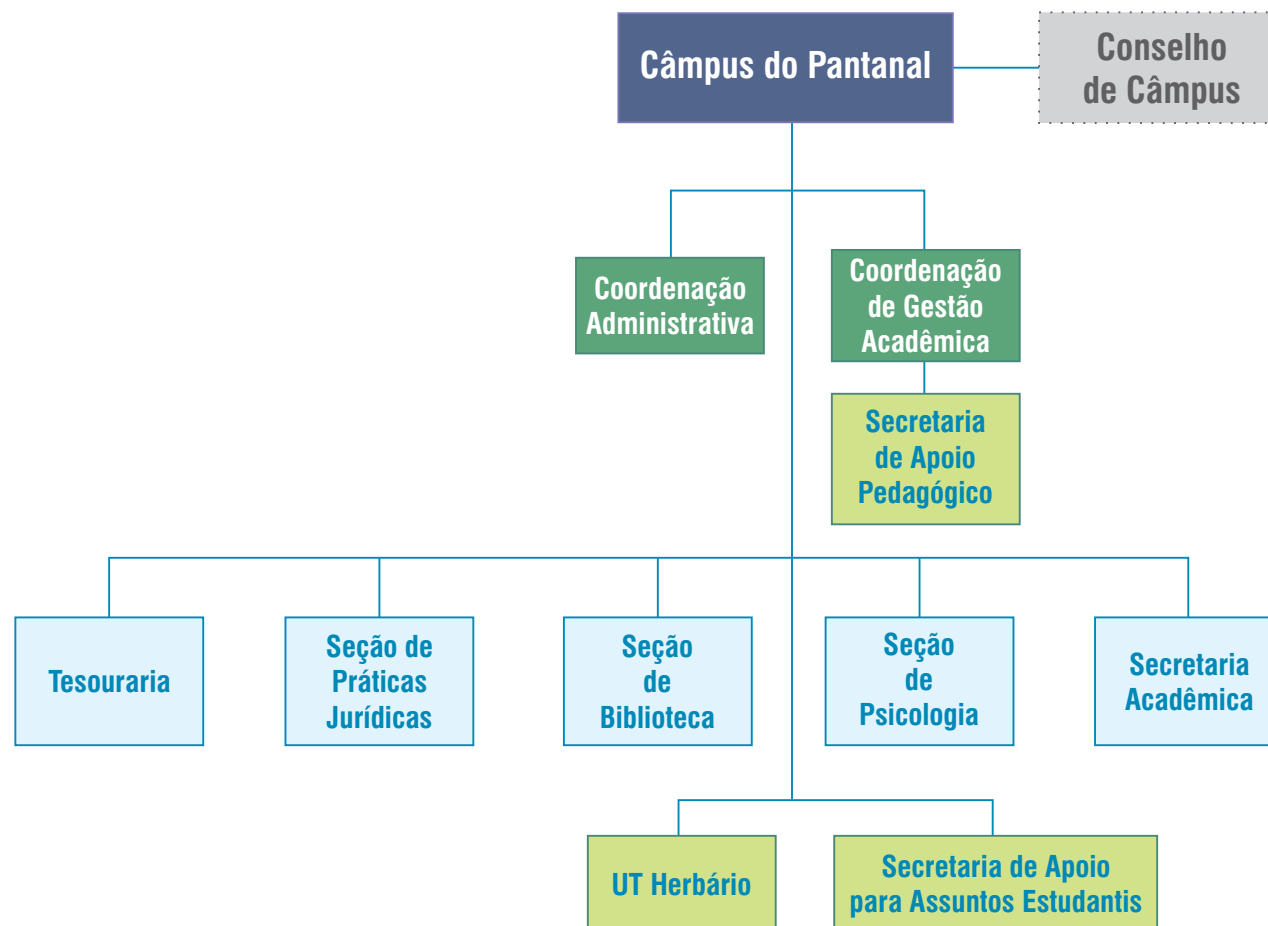
- CD 3
- CD 4
- FG 1





Estrutura Organizacional Câmpus do Pantanal

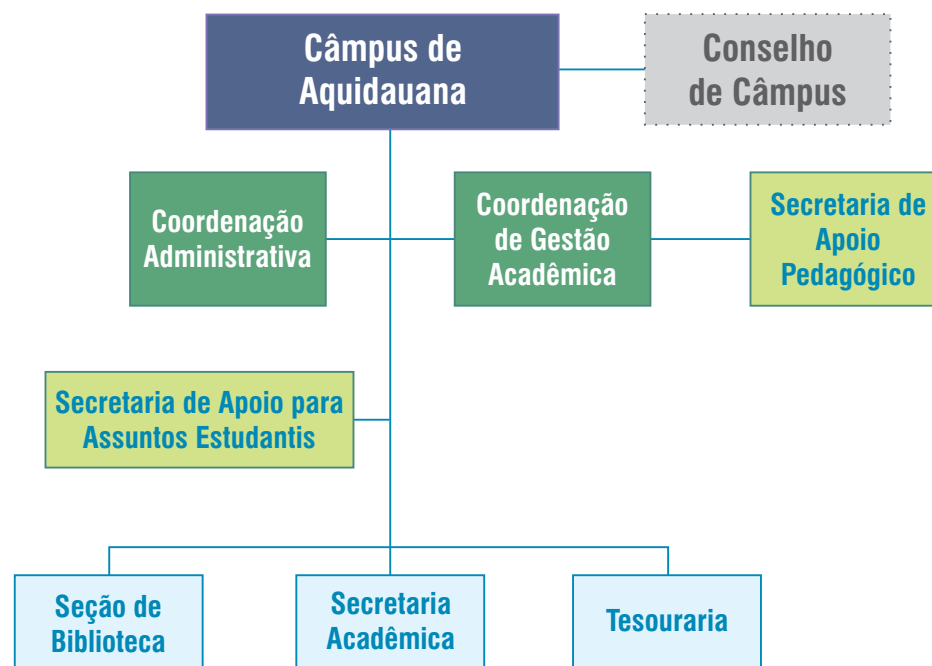
- CD 3
- FG 1
- FG 4
- FG 5





Estrutura Organizacional Câmpus de Aquidauana

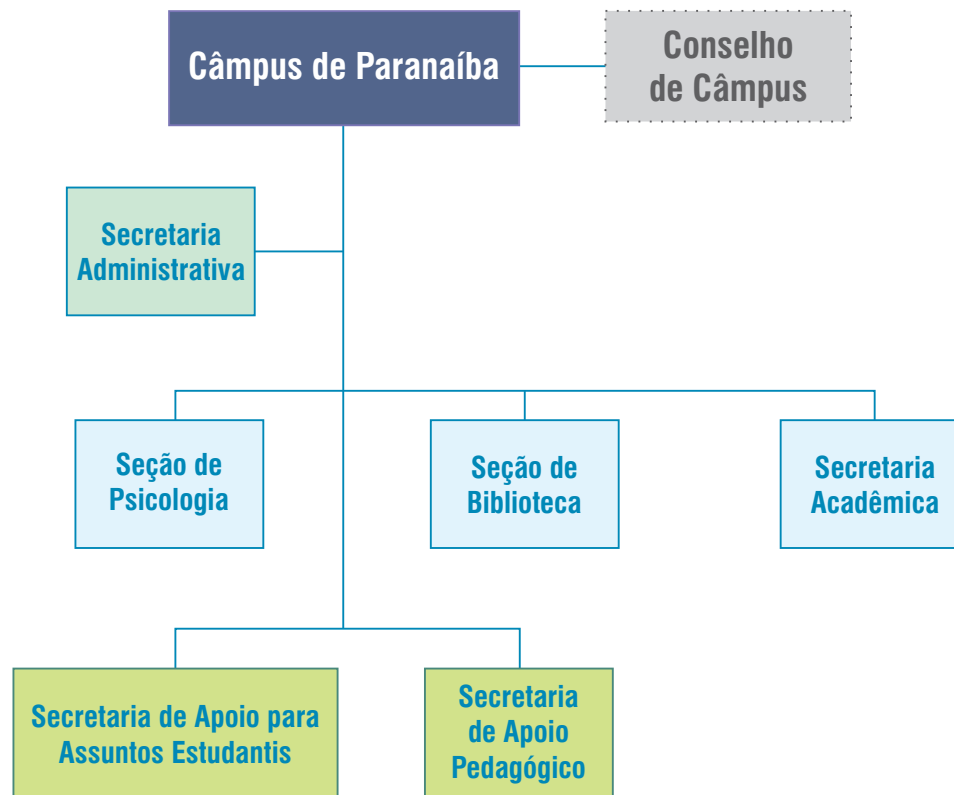
- CD 3
- FG 1
- FG 4
- FG 5





Estrutura Organizacional Câmpus de Paranaíba

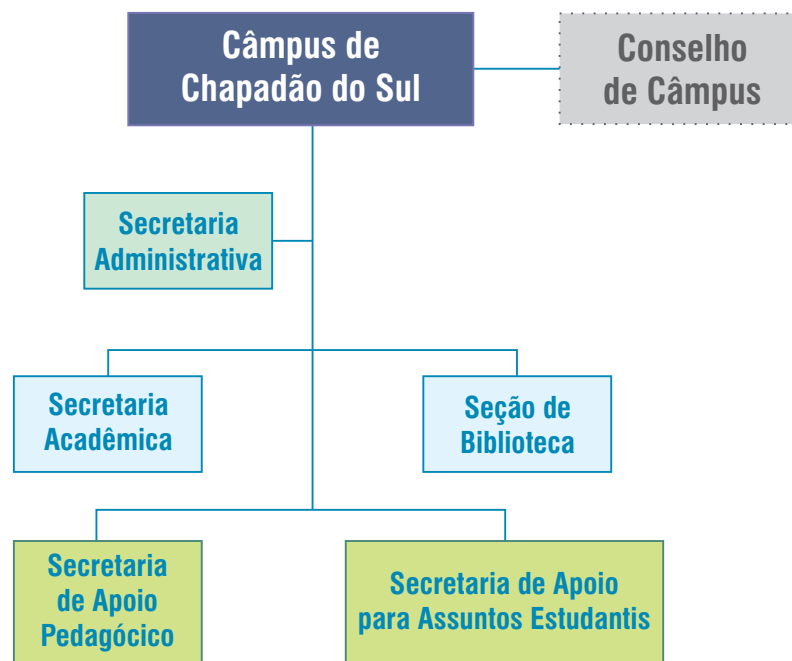
- CD 3
- FG 2
- FG 4
- FG 5





Estrutura Organizacional Câmpus de Chapadão do Sul

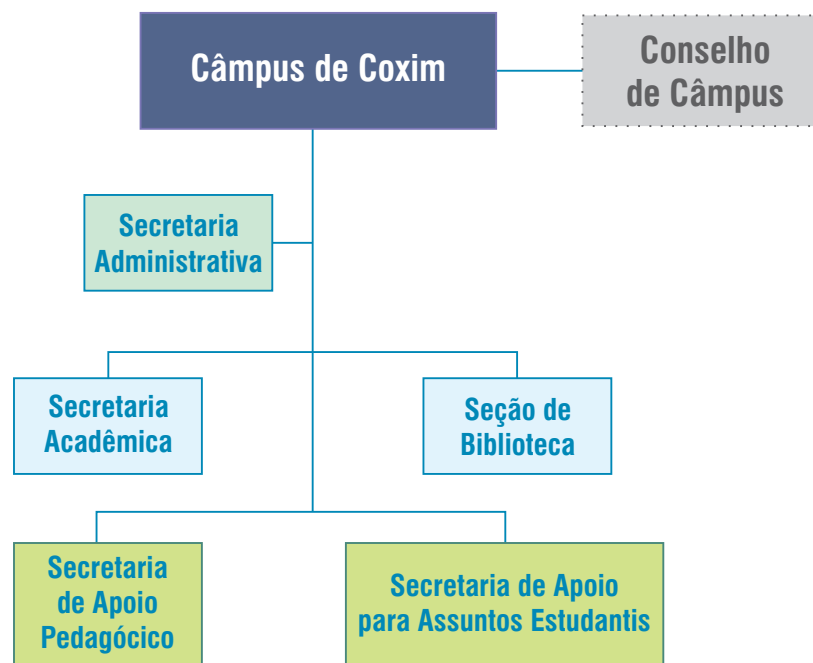
- CD 3
- FG 2
- FG 4
- FG 5





Estrutura Organizacional Câmpus de Coxim

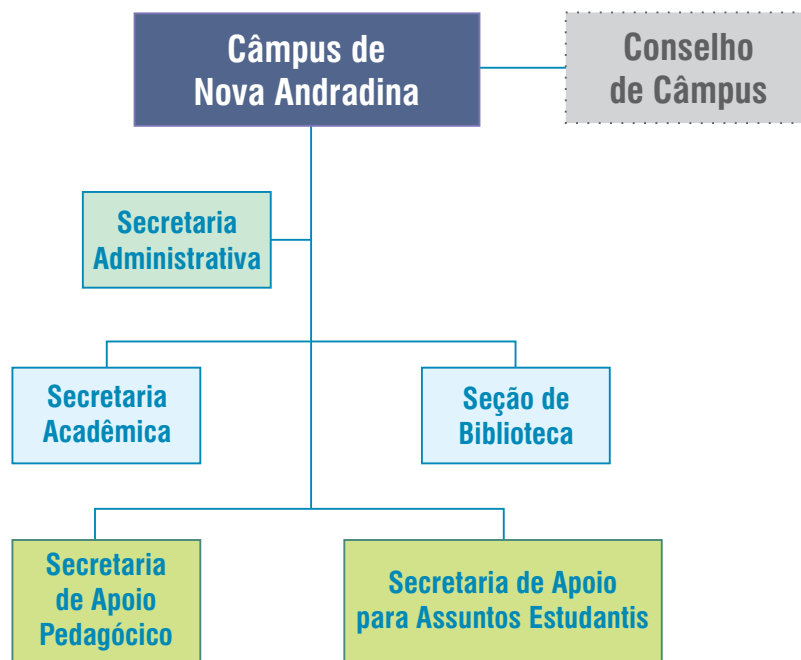
- CD 3
- FG 2
- FG 4
- FG 5





Estrutura Organizacional Câmpus de Nova Andradina

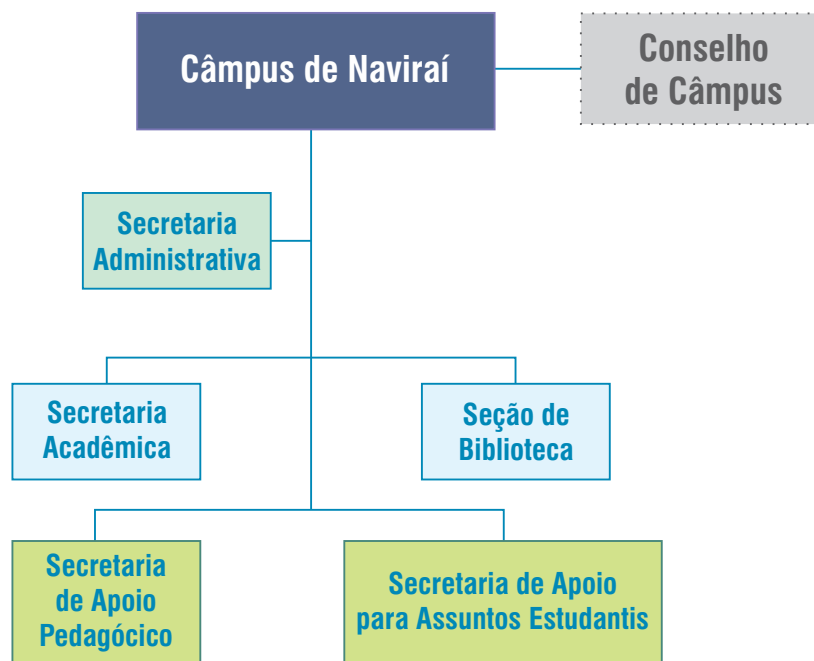
- CD 3
- FG 2
- FG 4
- FG 5





Estrutura Organizacional Câmpus de Naviraí

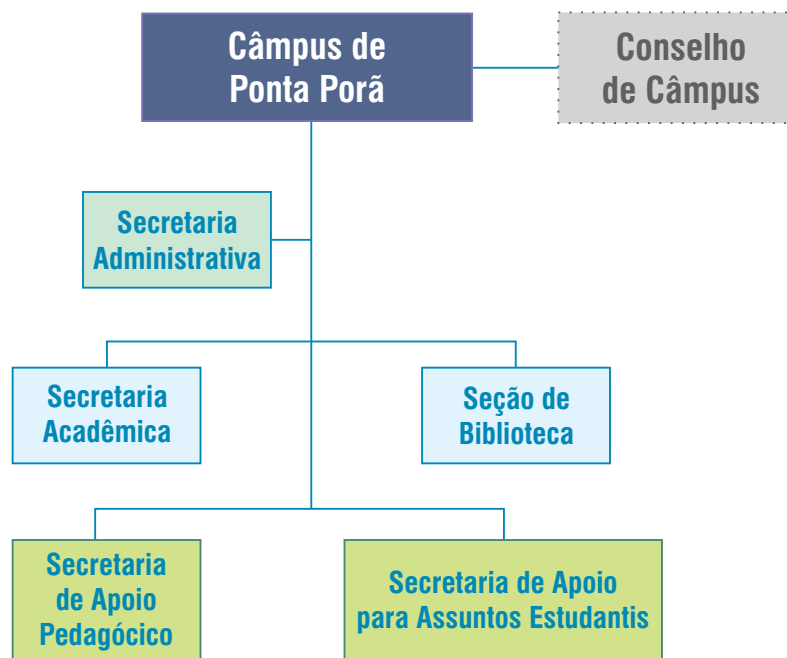
- CD 3
- FG 2
- FG 4
- FG 5

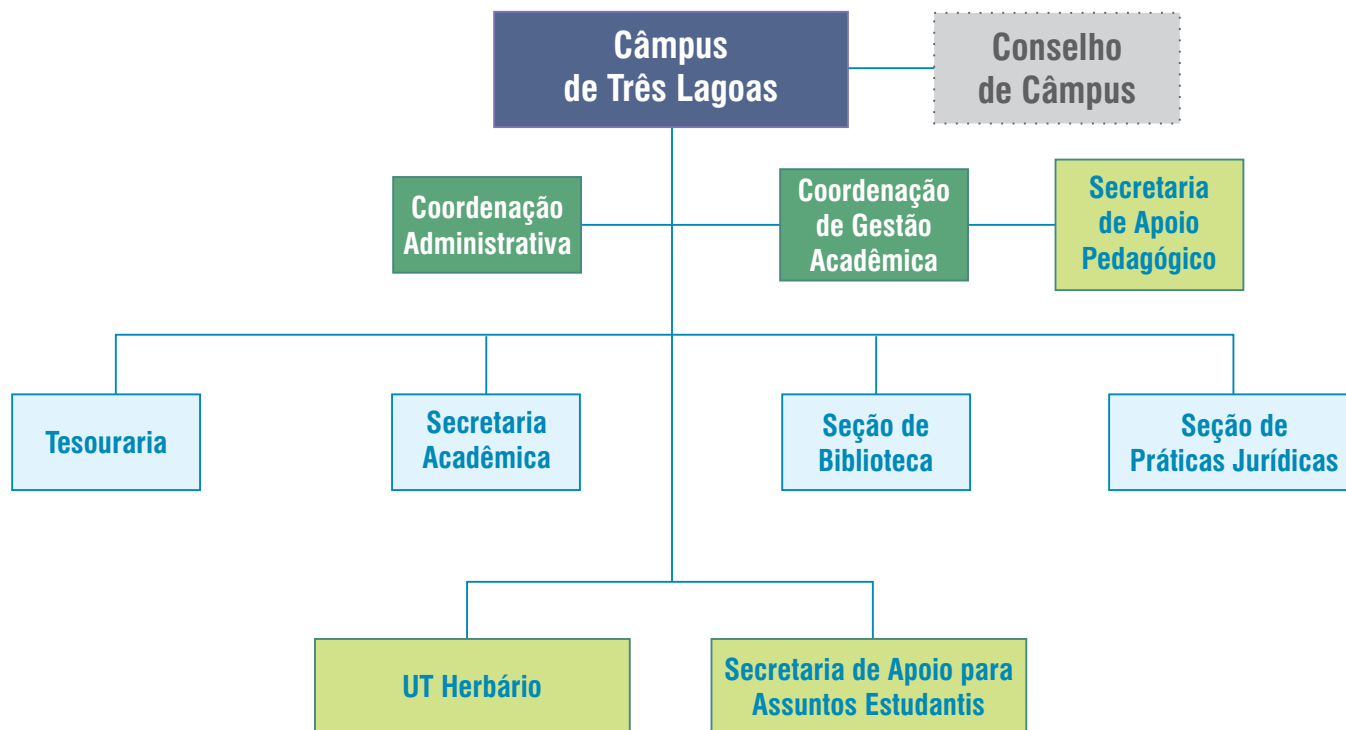




Estrutura Organizacional Câmpus de Ponta Porã

- CD 3
- FG 2
- FG 4
- FG 5

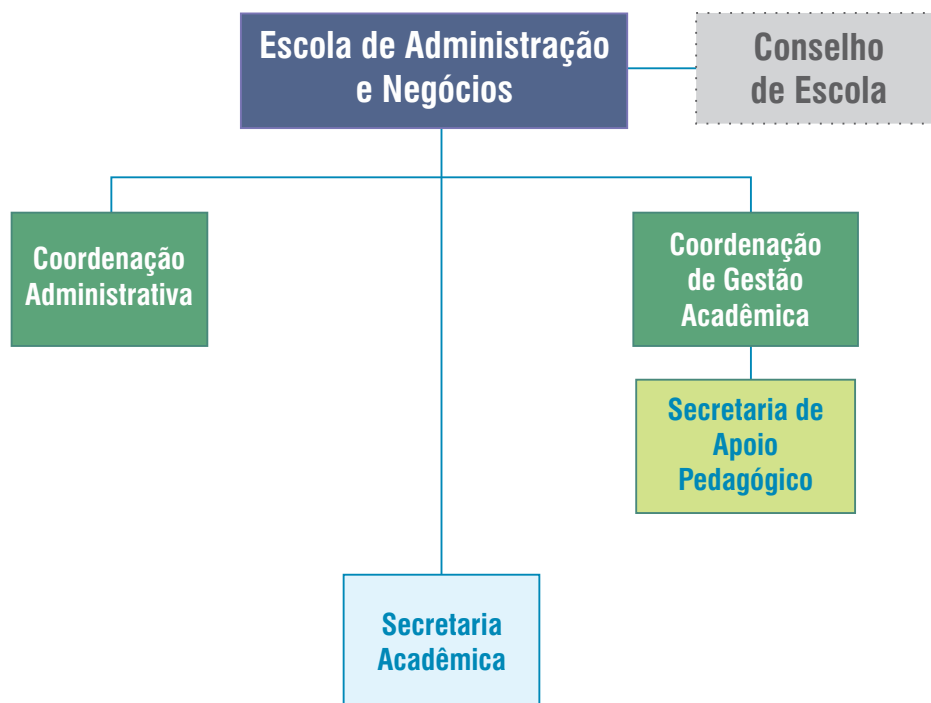






Estrutura Organizacional Escola de Administração e Negócios

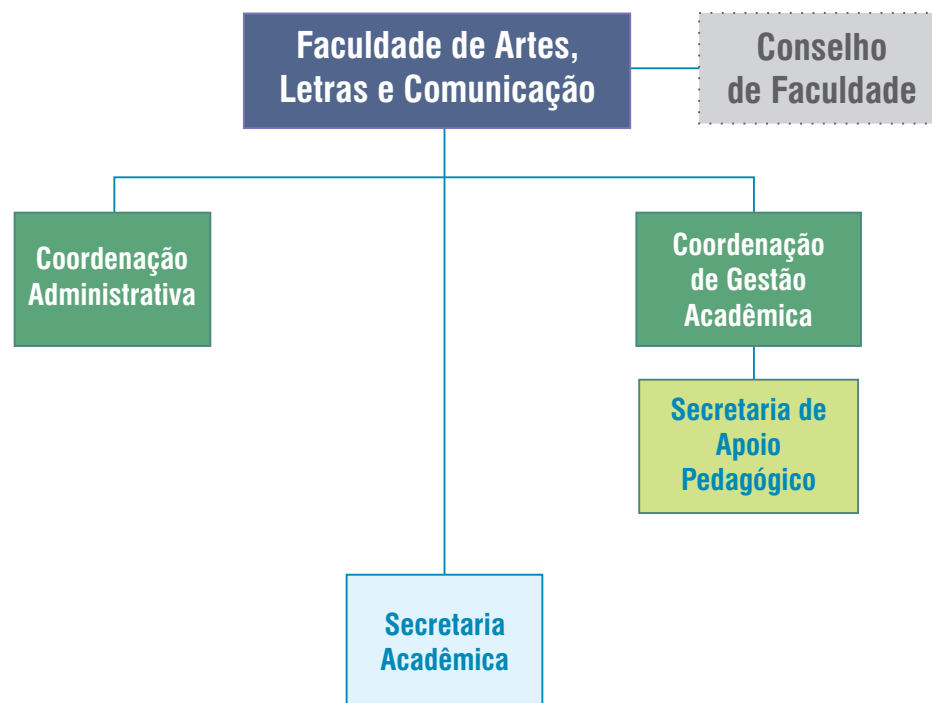
- CD 3
- FG 1
- FG 4
- FG 5





Estrutura Organizacional Faculdade de Artes, Letras e Comunicação

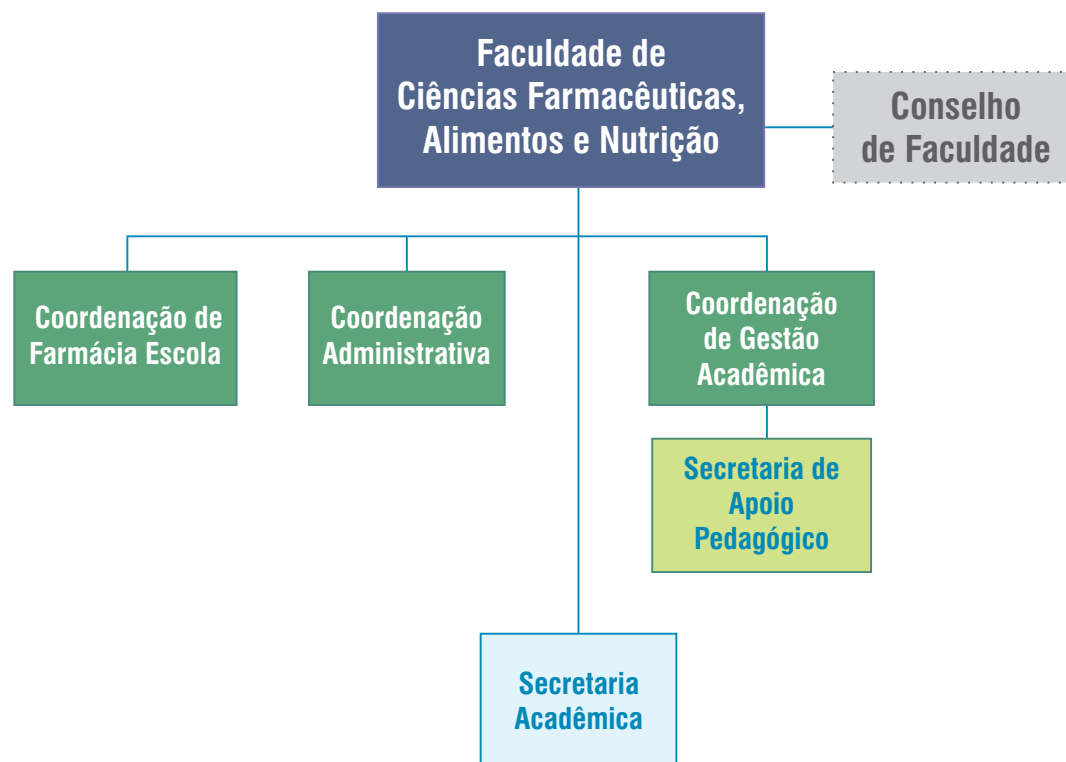
- CD 4
- FG 1
- FG 4
- FG 5





Estrutura Organizacional Faculdade de Ciências Farmacêuticas, Alimentos e Nutrição

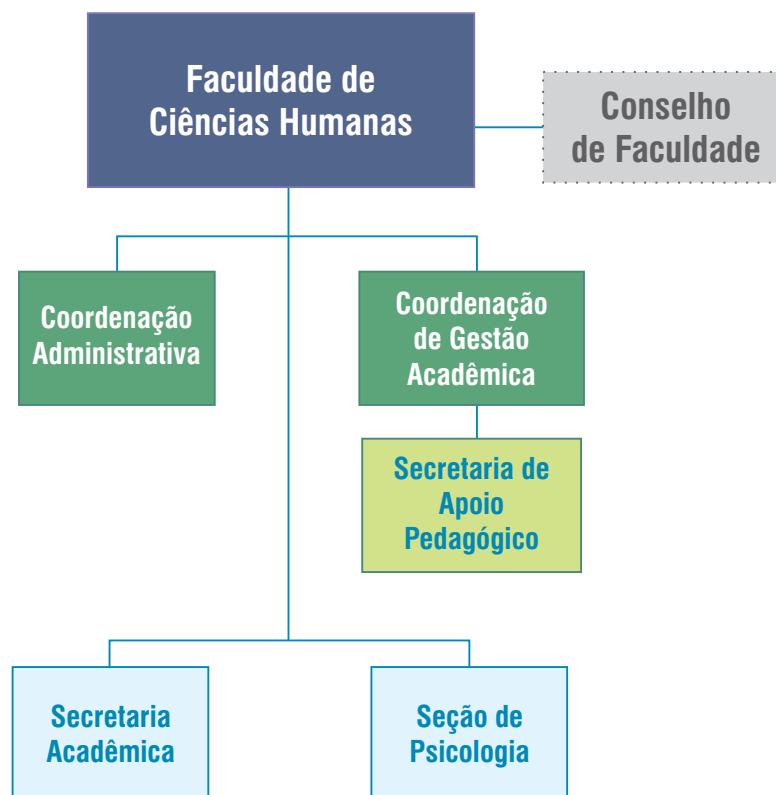
- CD 4
- FG 1
- FG 4
- FG 5

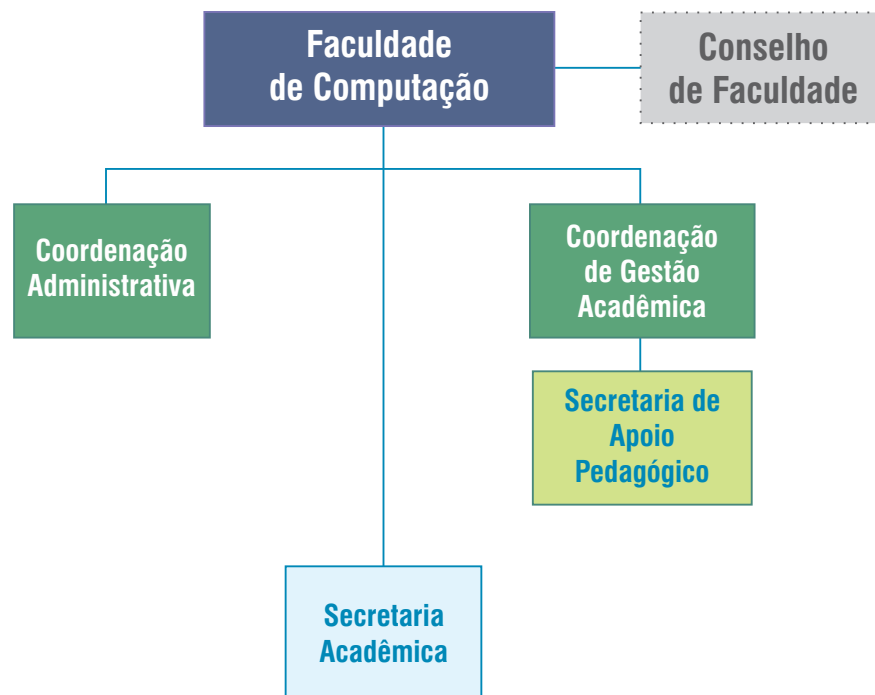


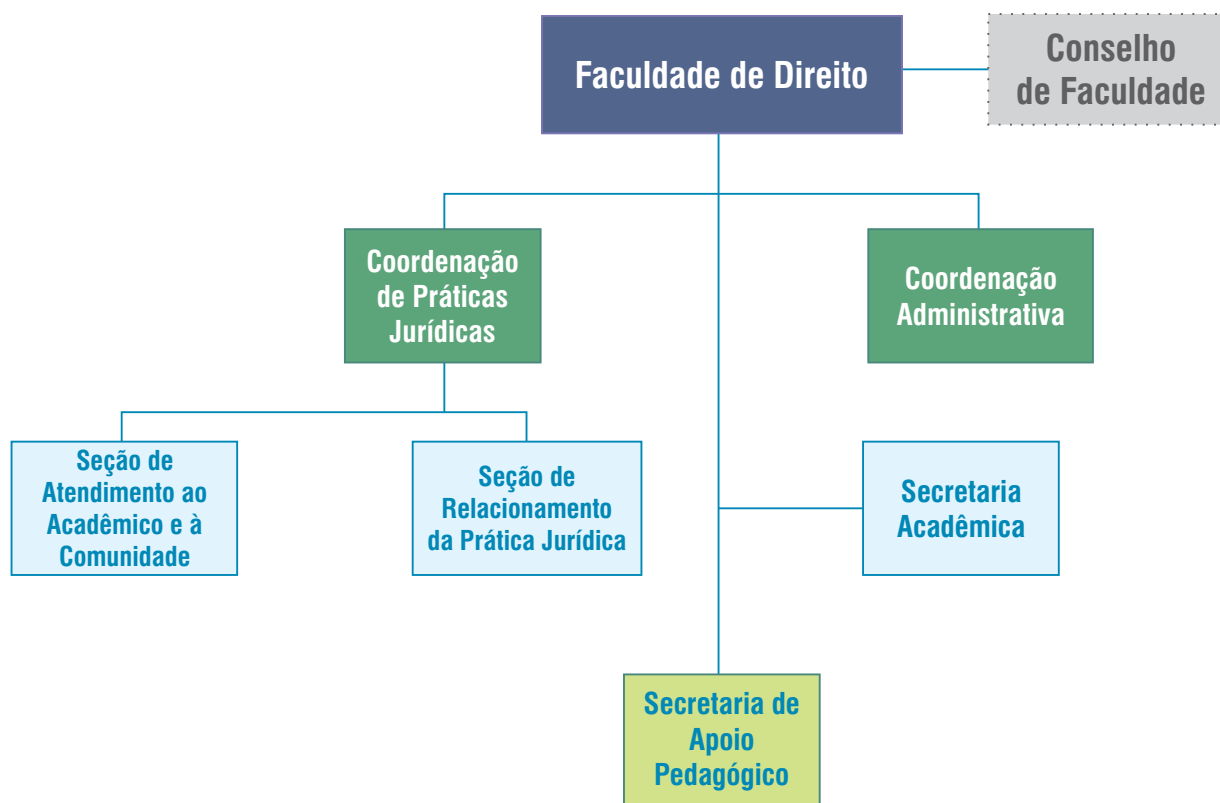


Estrutura Organizacional Faculdade de Ciências Humanas

- CD 4
- FG 1
- FG 4
- FG 5



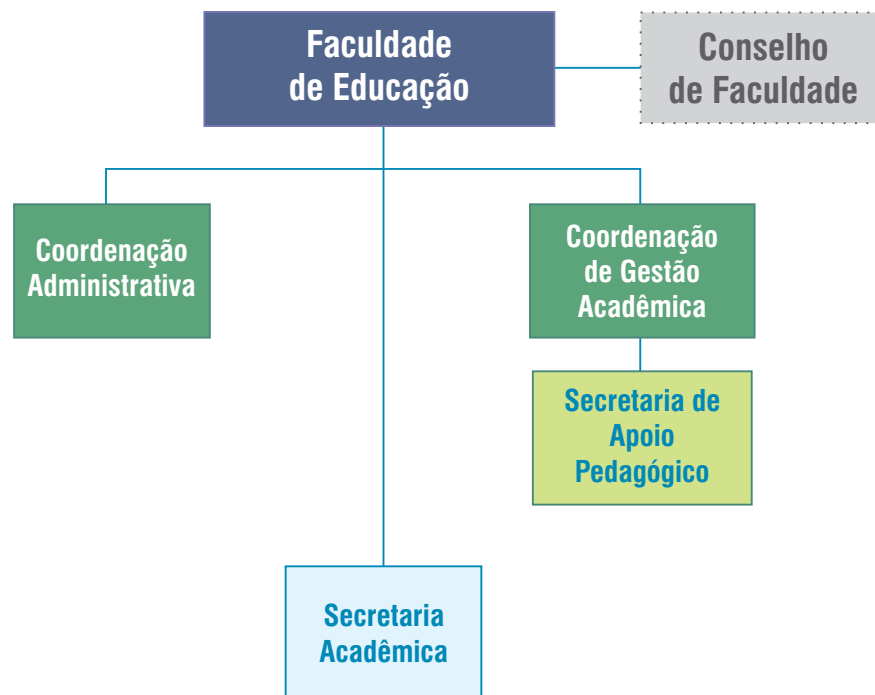






Estrutura Organizacional Faculdade de Educação

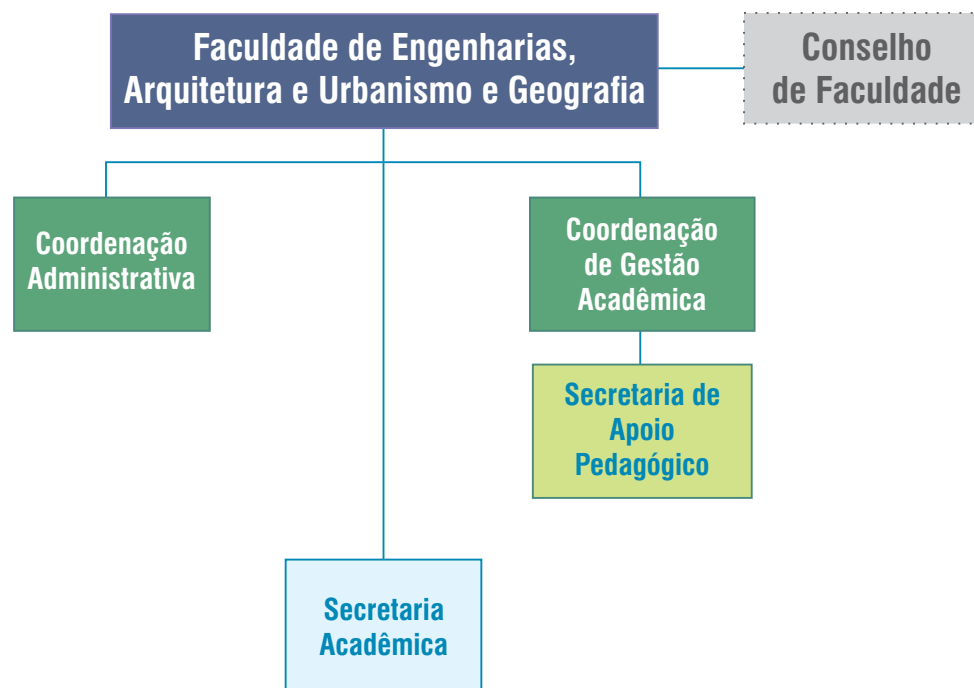
- CD 4
- FG 1
- FG 4
- FG 5





Estrutura Organizacional Faculdade de Engenharias, Arquitetura e Urbanismo e Geografia

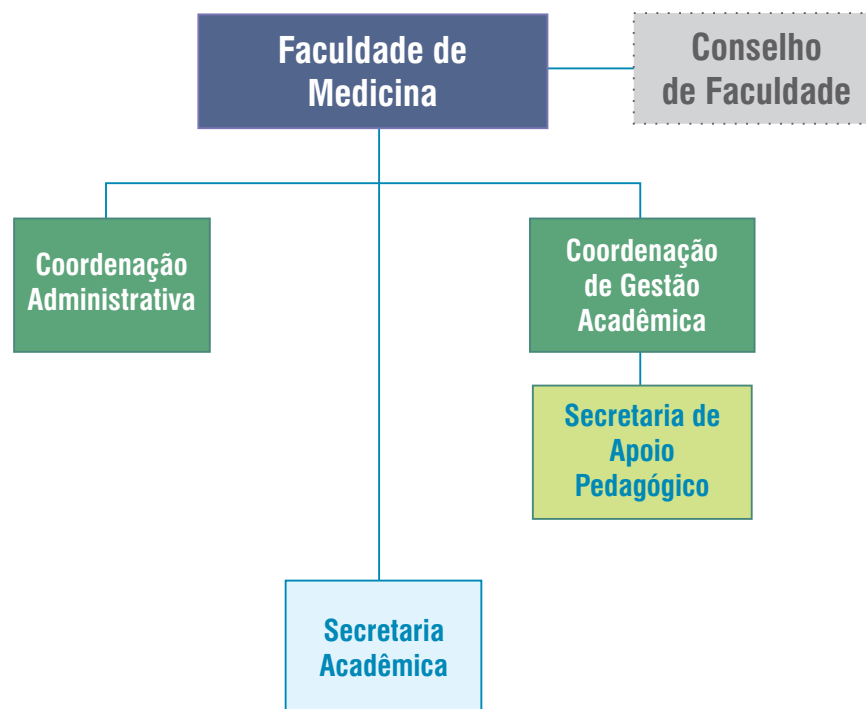
- CD 3
- FG 1
- FG 4
- FG 5





Estrutura Organizacional Faculdade de Medicina

- CD 3
- FG 1
- FG 4
- FG 5

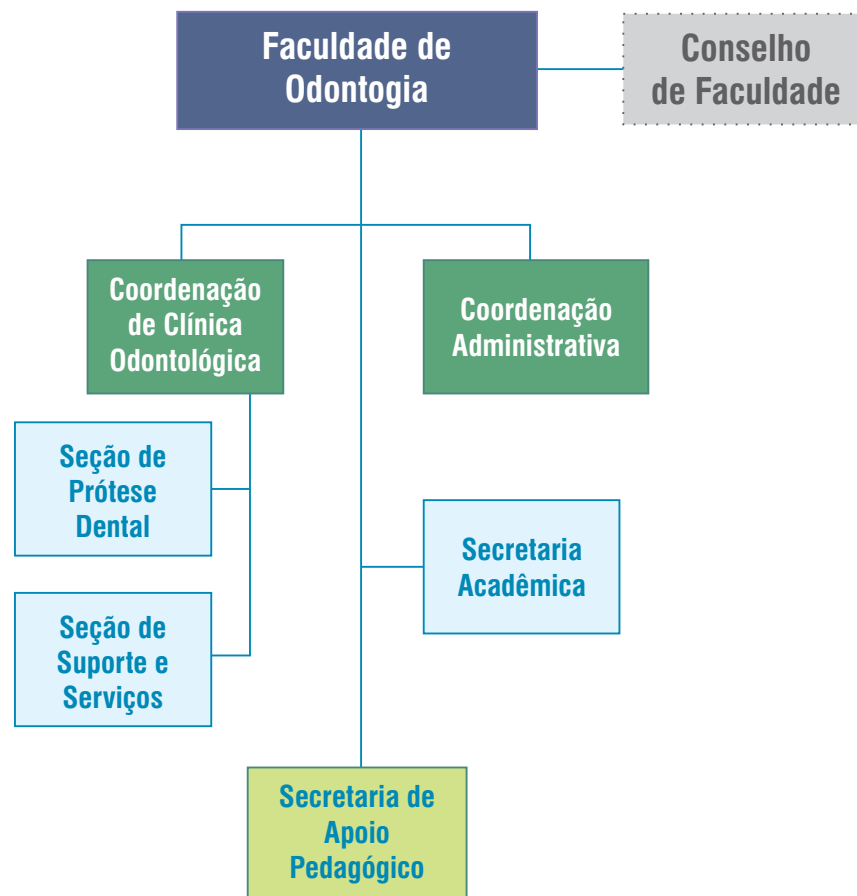




Estrutura Organizacional Faculdade de Medicina Veterinária e Zootecnia

- CD 3
- FG 1
- FG 4
- FG 5

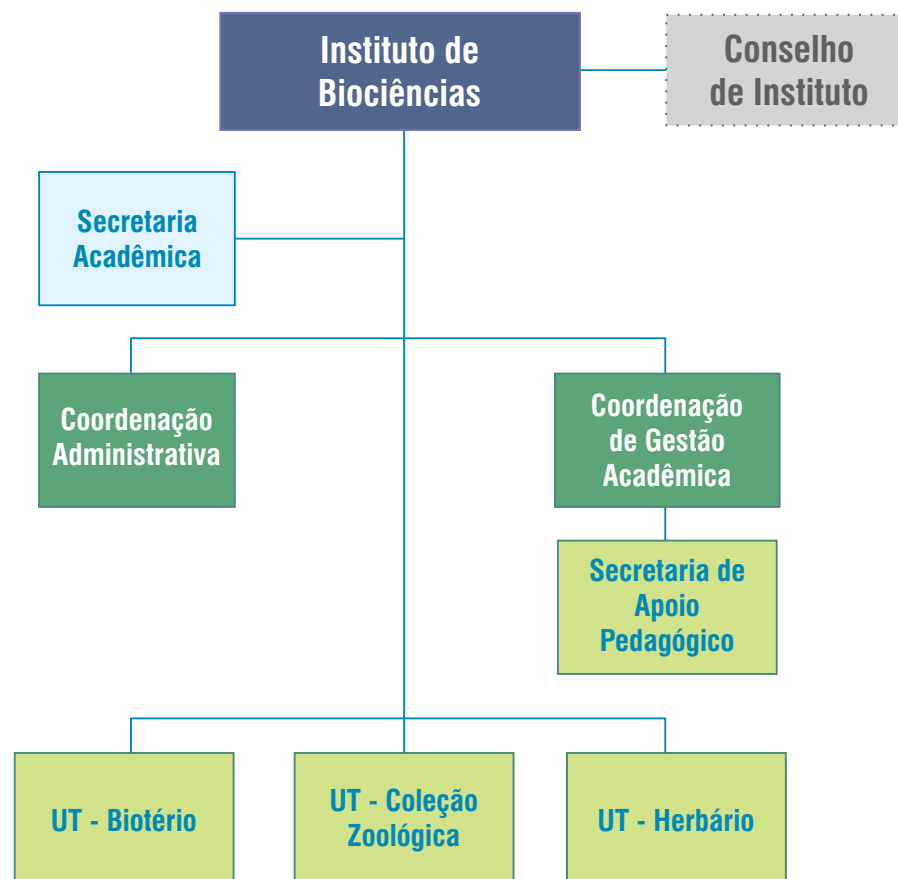






Estrutura Organizacional Instituto de Biociências

- CD 4
- FG 1
- FG 4
- FG 5

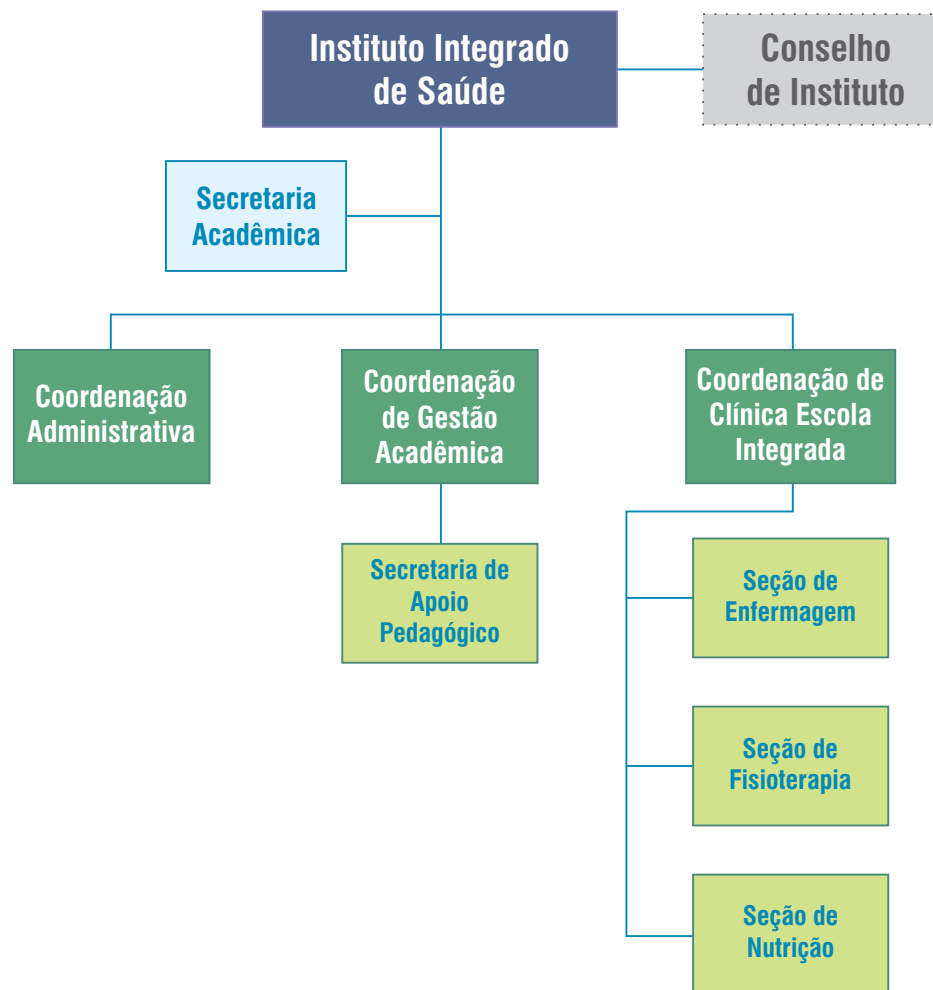




Estrutura Organizacional Instituto de Física

- CD 3
- FG 1
- FG 4
- FG 5

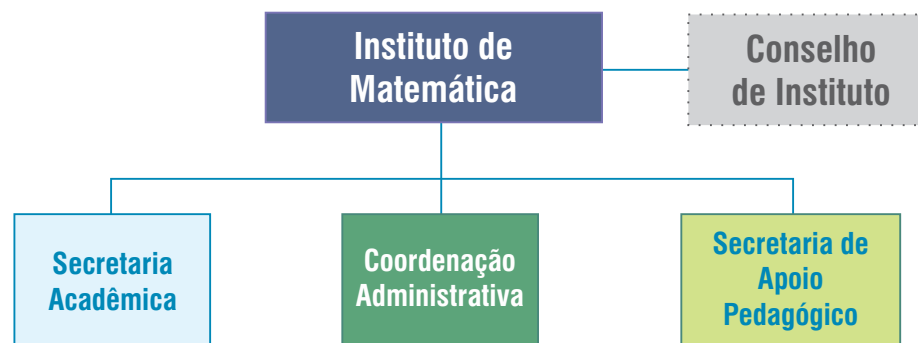


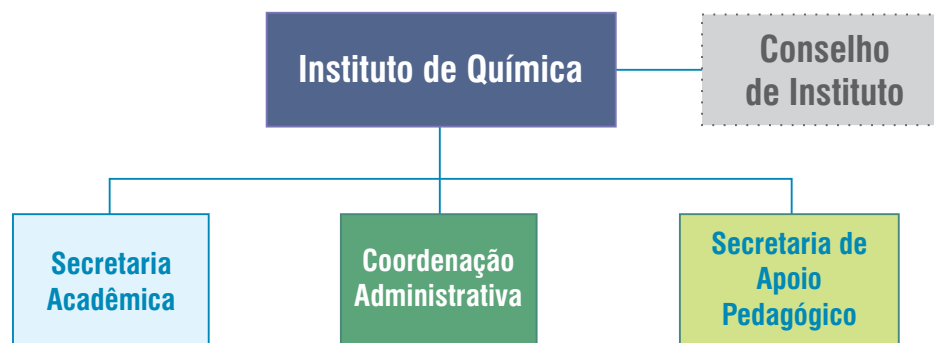




Estrutura Organizacional Instituto de Matemática

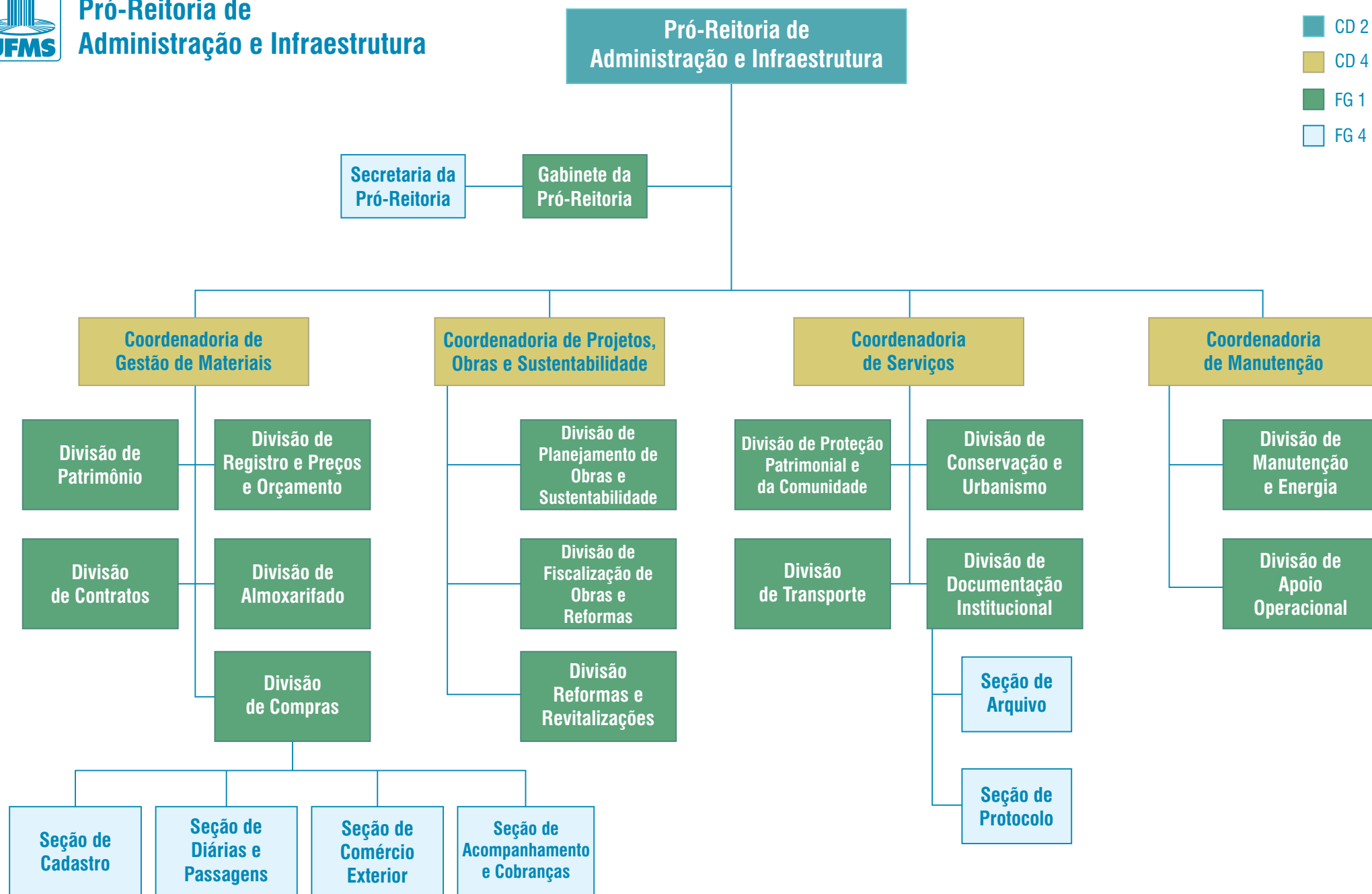
- CD 3
- FG 1
- FG 4
- FG 5





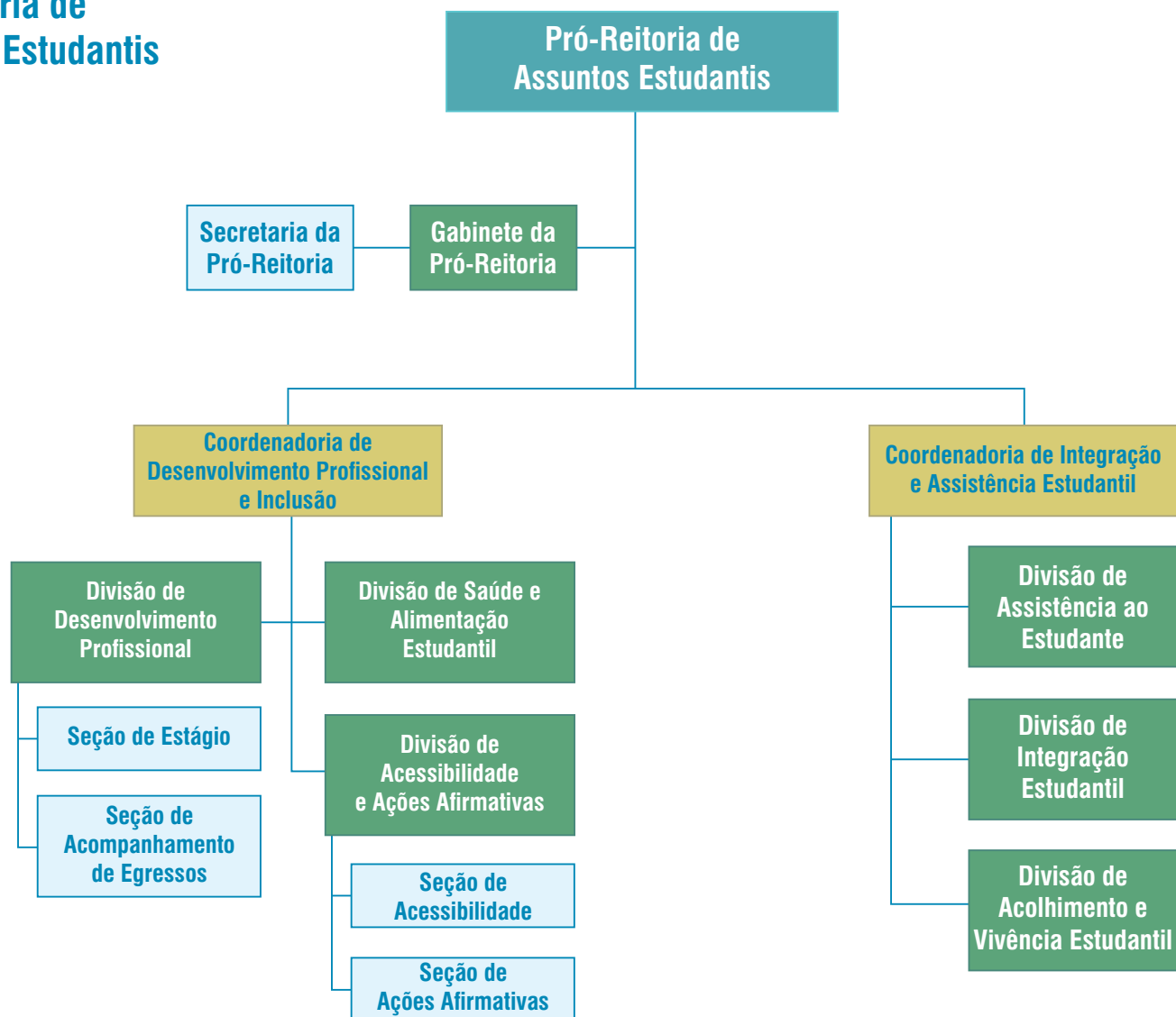


Estrutura Organizacional Pró-Reitoria de Administração e Infraestrutura





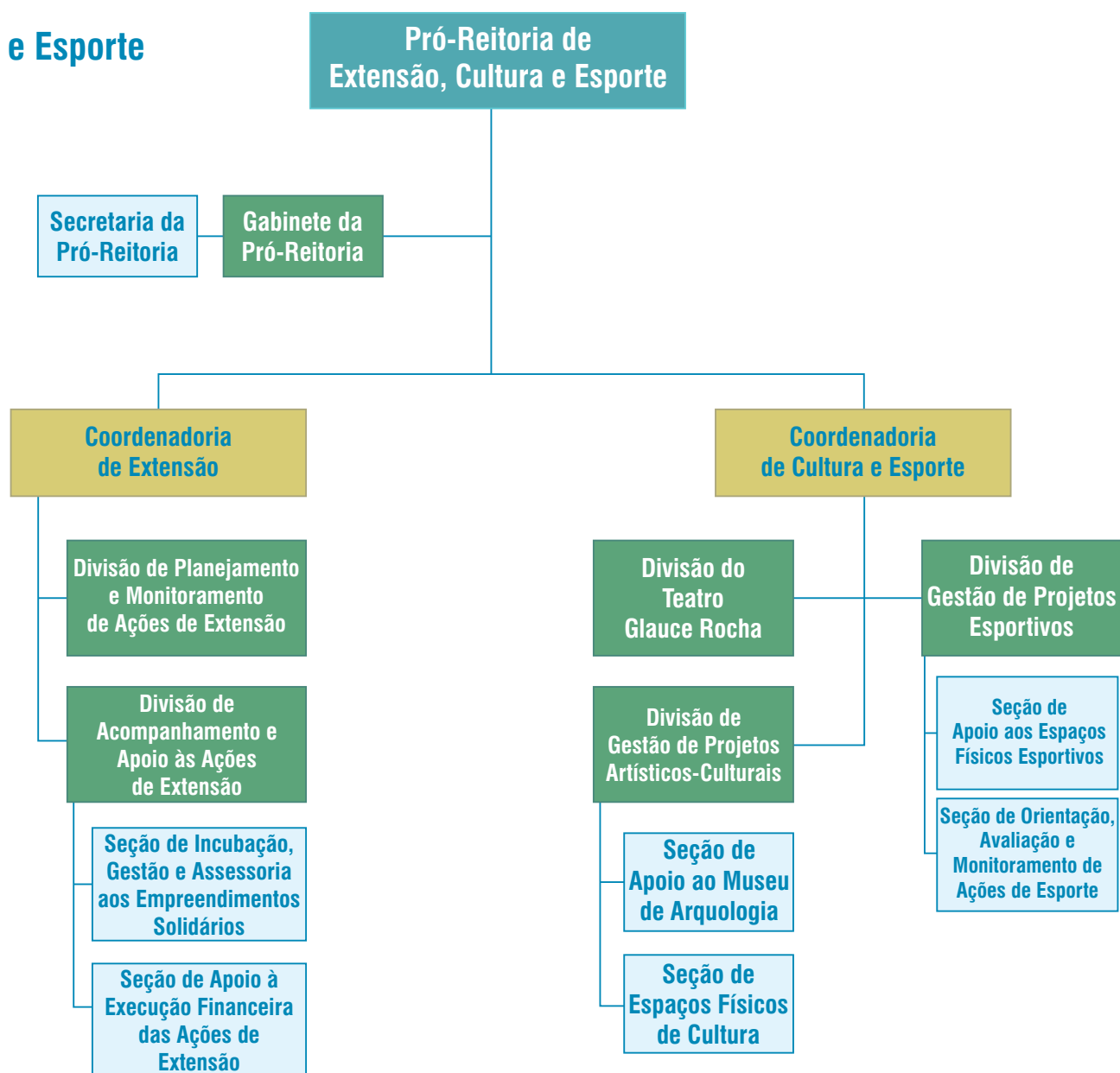
Estrutura Organizacional Pró-Reitoria de Assuntos Estudantis



- CD 2
- CD 4
- FG 1
- FG 4



Estrutura Organizacional Pró-Reitoria de Extensão, Cultura e Esporte

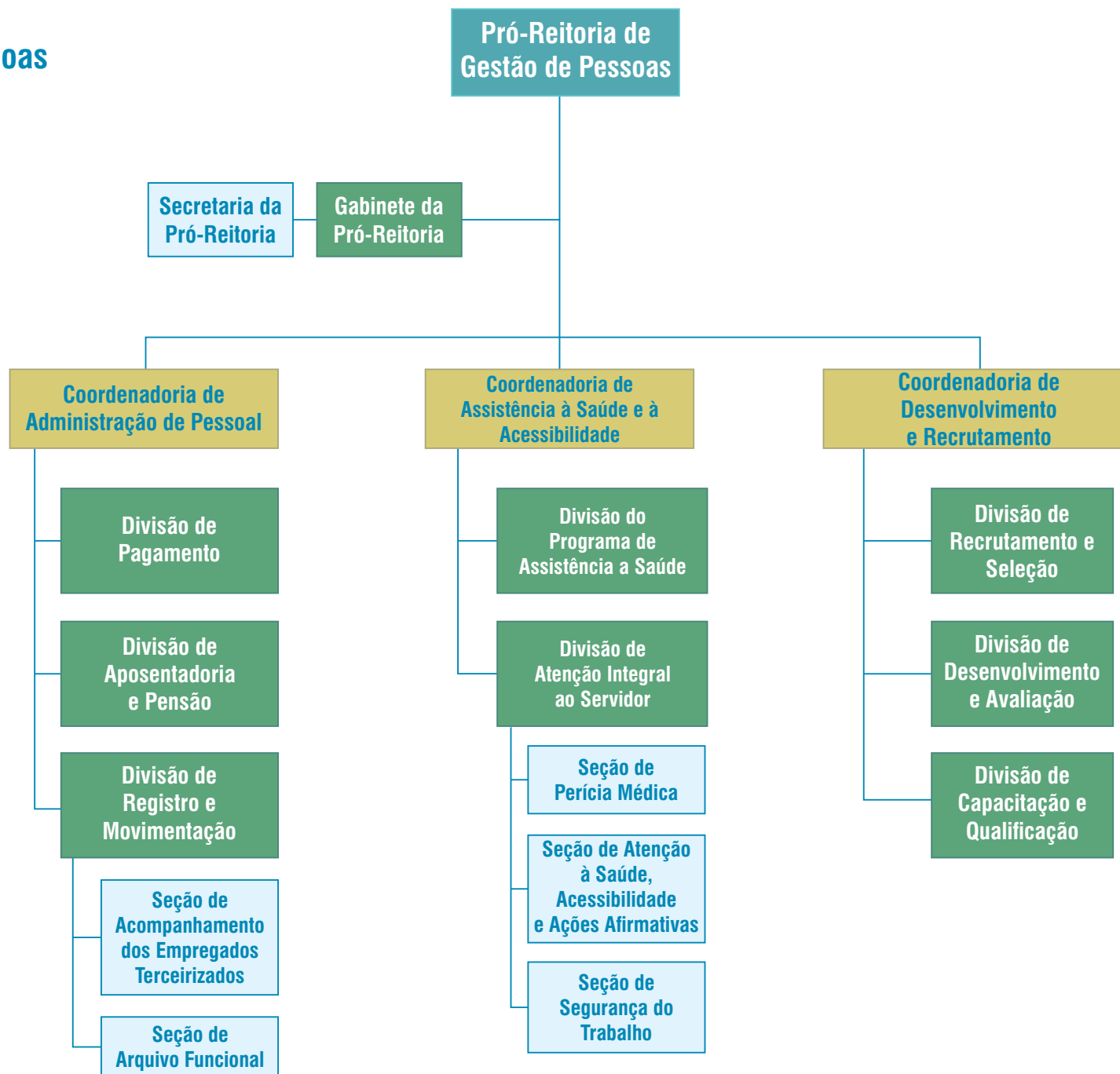


- CD 2
- CD 4
- FG 1
- FG 4

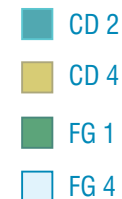
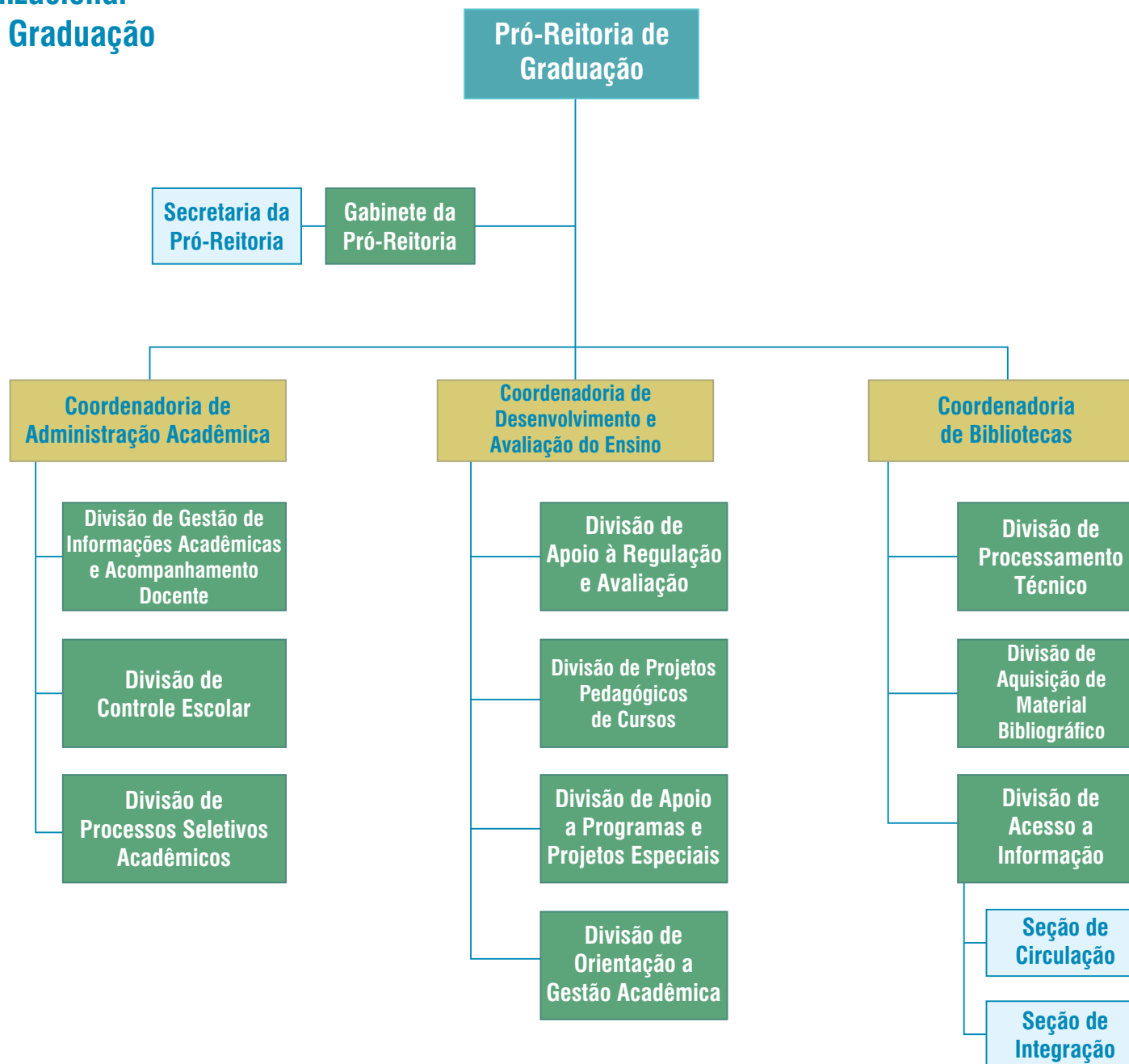


Estrutura Organizacional

Pró-Reitoria de Gestão de Pessoas

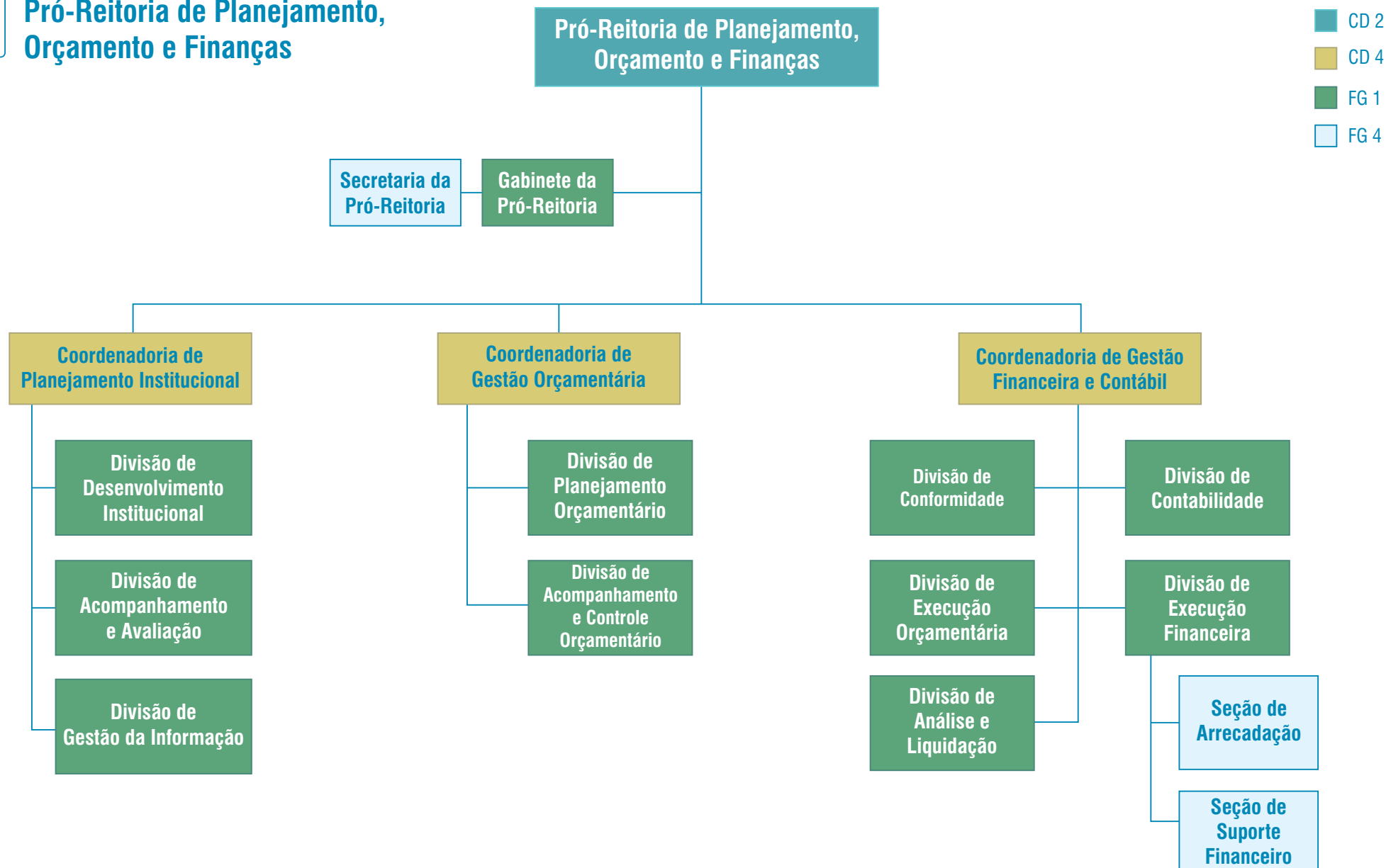


- CD 2
- CD 4
- FG 1
- FG 4



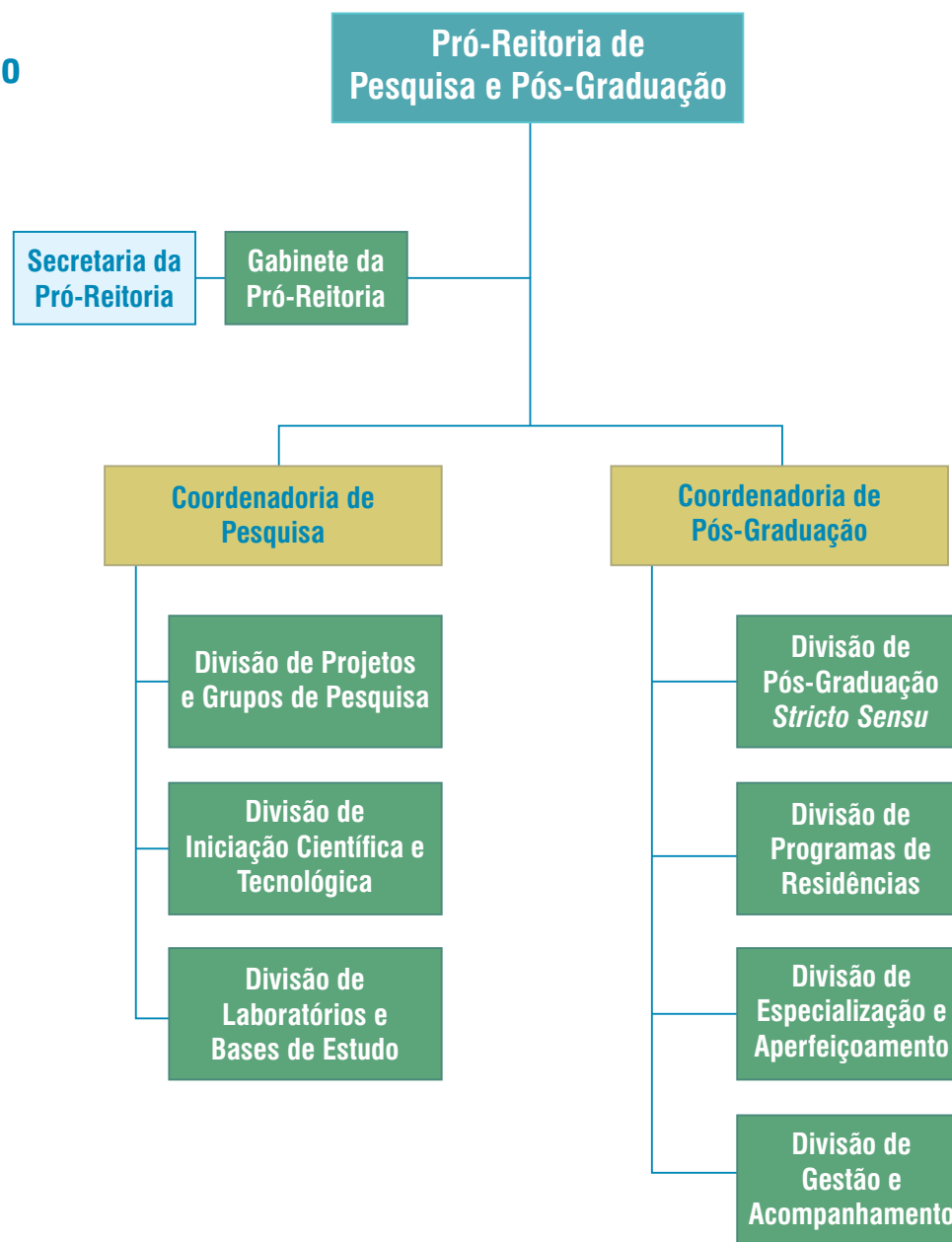


Estrutura Organizacional Pró-Reitoria de Planejamento, Orçamento e Finanças





Estrutura Organizacional Pró-Reitoria de Pesquisa e Pós-Graduação



- CD 2
- CD 4
- FG 1
- FG 4